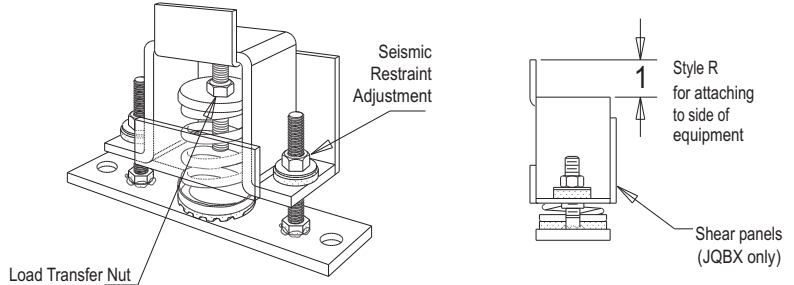




Features and Advantages

Surface Treatment:

- Housings Hot Dip Galvanized (HDG)
- Hardware Zinc Plated
- Springs Powder Coated or Zinc Plated



*JQBX shown (style R)

Description

All Spring Mount JQ Series isolator/restraints feature large diameter springs with O.D. equal or greater than 80 of rated load height, except 6080 with 3/4" deflection. For compact support of heavy loads, many JQ series include inner springs. For low profile support of heavy loads, JQE have clustered springs.

RATED LOAD & P/N		E Springs 1" Deflection
JQA Size	E21, E55, E79, E106, E143, E187, E244, E318, E415, E500, E633, E690, E801	
JQB & JQBX Size	ET255, ET347, ET473, E630, E806, E1030, E1230, E1490, E1810	
JQE Size	E976, E1272, E1660, E2000, E2532, E3204, E4128, 6080	

OPA-0070 PRE-APPROVED MAXIMUM ALLOWABLE LOADS		
SIZE	HORIZ.	VERT.
JQA	800	1660
JQB	1000	1600
JQBX	1500	2000
JQE	3200	4300

*in pounds

DIMENSIONAL DATA						
Housing Size	L	W	M	T	D	Approximate Oper. Height
JQA	7	2	6	2-3/4	3/8	4-1/2
JQB/JQBX	10-1/2	3-1/2	9	4	1/2	5-1/2
JQE	14	5	12	6	5/8	5

*in inches

